

# SF6400PZX



|                 |                   |
|-----------------|-------------------|
| Category        | 60cm              |
| Product Family  | Oven              |
| Power supply    | Electric          |
| Heat source     | ELECTRICITY       |
| Cooking method  | Thermo-ventilated |
| Cleaning system | Ever Clean enamel |
| Pizza Oven      | Yes               |
| EAN code        | 8017709324995     |



## Aesthetics

|                   |                 |                 |                   |
|-------------------|-----------------|-----------------|-------------------|
| Aesthetic         | Selezione       | Serigraphy type | Symbols           |
| Colour            | Stainless steel | Door            | With panel        |
| Finishing         | Fingerproof     | Handle          | Selection squared |
| Design            | Flat            | Handle Colour   | Steel effect      |
| Material          | Stainless steel | Logo            | Embossed          |
| Type of steel     | Brushed         | Control knobs   | Cucina restyling  |
| Glass Type        | Eclipse         | Controls colour | Steel effect      |
| Serigraphy colour | Black           |                 |                   |









## Controls

|  |            |                 |                       |
|--|------------|-----------------|-----------------------|
|  |            |                 |                       |
| Display name   | DigiScreen | Control setting | Knobs & touch buttons |
| Display technology   | LED        | No. of controls | 2                     |

## Programs / Functions main oven

No. of cooking functions 8

Traditional cooking functions

|  |  |   |
|--|--|---|
|  Static            |  Fan assisted |  Circulaire        |
|  Eco               |  Large grill  |  Fan grill (large) |
|  Fan assisted base |  Pizza        |   |

## Other functions



Leavening

## Options



|                             |                       |
|-----------------------------|-----------------------|
| <b>Time-setting options</b> | Automatic end cooking |
| <b>Minute minder</b>        | Yes                   |

|                          |     |
|--------------------------|-----|
| <b>Timer</b>             | 1   |
| <b>Rapid pre-heating</b> | Yes |

## Technical Features



|   |         |
|---|---------|
| <b>Minimum Temperature</b>              | 50 °C   |
| <b>Maximum temperature</b>              | 250 °C  |
| <b>No. of shelves</b>                   | 5       |
| <b>N. of fans</b>                       | 1       |
| <b>No. of lights</b>                    | 1       |
| <b>Light type</b>                       | Halogen |
| <b>User-replaceable light</b>           | Yes     |
| <b>Light Power</b>                      | 40 W    |
| <b>Lower heating element power</b>      | 1100 W  |
| <b>Upper heating element - Power</b>    | 1000 W  |
| <b>Grill element - power</b>            | 1700 W  |
| <b>Large grill - Power</b>              | 2700 W  |
| <b>Circular heating element - Power</b> | 2000 W  |

|   |                    |
|---|--------------------|
| <b>Door</b>                                   | Fresh Touch        |
| <b>Removable door</b>                         | Yes                |
| <b>Full glass inner door</b>                  | Yes                |
| <b>Removable inner door</b>                   | Yes                |
| <b>Total no. of door glasses</b>              | 3                  |
| <b>Chimney</b>                                | Fixed              |
| <b>Cooling system</b>                         | Tangential         |
| <b>Cooling duct</b>                           | Double             |
| <b>Speed Reduction Cooling System</b>         | Yes                |
| <b>Usable cavity space dimensions (HxWxD)</b> | 331x460x412 mm     |
| <b>Temperature control</b>                    | Electro-mechanical |
| <b>Cavity material</b>                        | Ever clean Enamel  |

## Performance / Energy Label



|  |          |
|--|----------|
| <b>Energy efficiency class</b>                           | A        |
| <b>Net volume of the cavity</b>                          | 65 l     |
| <b>Energy consumption per cycle in conventional mode</b> | 1.09 KWh |
| <b>Energy consumption in conventional mode</b>           | 3.92 MJ  |

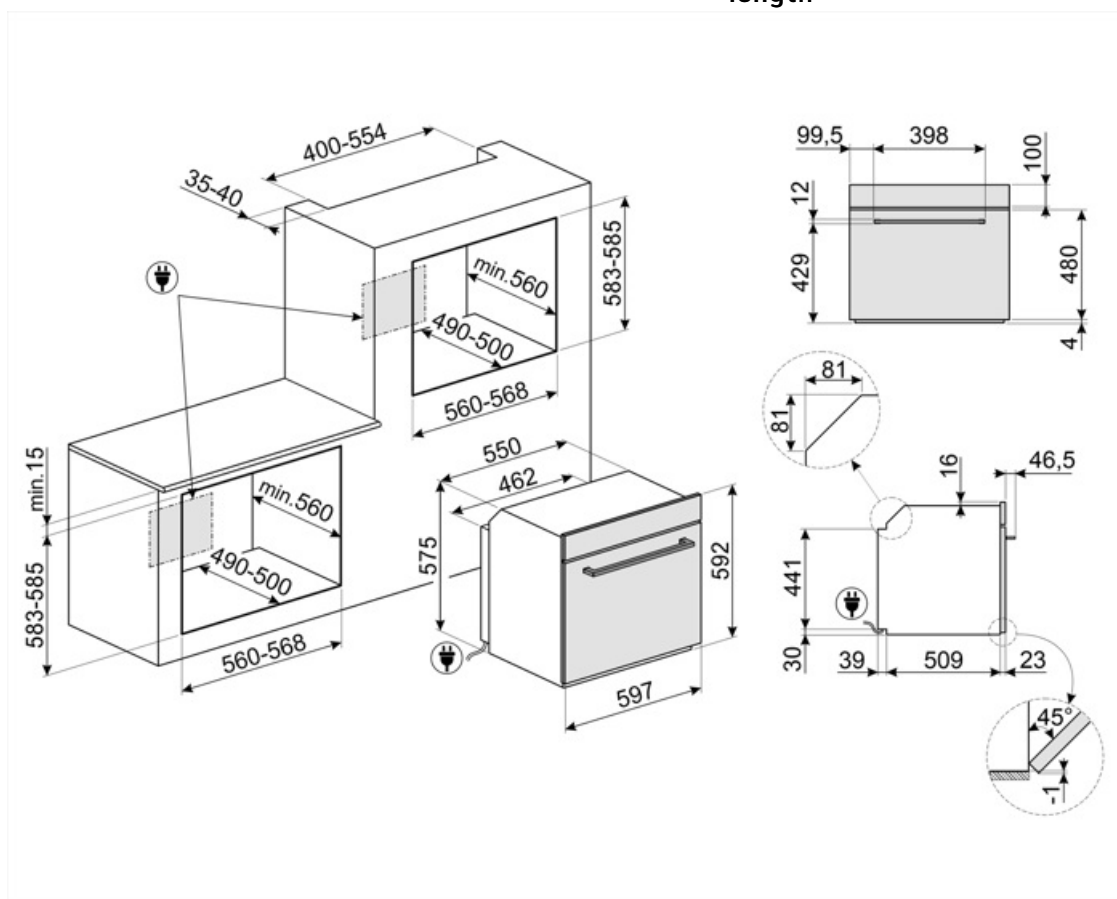
|  |          |
|--|----------|
| <b>Energy consumption in forced air convection</b>           | 2.81 MJ  |
| <b>Energy consumption per cycle in fan-forced convection</b> | 0.78 KWh |
| <b>Number of cavities</b>                                    | 1        |
| <b>Energy efficiency index</b>                               | 95,1 %   |

## Accessories included

|                                   |   |                          |  |
|-----------------------------------|---|--------------------------|--|
| <b>Rack with back stop</b>        | 1 | <b>Pizza Accessories</b> | Refractory stone (round without handles) + cover |
| <b>Enamelled deep tray (40mm)</b> | 1 |                          |  |

## Electrical Connection

|         |             |                           |          |
|---------|-------------|---------------------------|----------|
| Plug    | Not present | Nominal power             | 3000 W   |
| Voltage | 220-240 V   | Frequency (Hz)            | 50/60 Hz |
| Current | 13 A        | Power supply cable length | 150 cm   |



## Compatible Accessories



### BN620-1

Enamelled tray suitable for 45cm and 60cm ovens. Depth 20 mm. Perfect for a wide range of savoury and sweet baking.



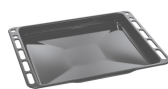
### GTP

Partially extractable telescopic guides (1 level), suitable for traditional ovens. Made in stainless steel, they guarantee stability and facilitate the smooth extraction of the trays.



### PALPZ

Pizza shovel with folding handle. Dimensions L31.5 x H32.5 cm. Easy and convenient to use and store. Perfect for serving pizza, bread and savory pastries in a safe and professional way.



### BN640

Enamelled tray suitable for 45cm and 60cm ovens. Depth 540 mm. Perfect for cooking and roasting meat and fish in sauces. Also ideal for experimenting with lighter and crunchy side dishes



### GTT

Totally extractable telescopic guides (1 level), suitable for traditional ovens. Made in stainless steel, they guarantee stability and facilitate the smooth extraction of the trays.



### PR3845X

Antifingerprint stainless steel. Cover for furniture in column installation of more ovens

## Symbols glossary



Triple glazed doors: Number of glazed doors.



**Ever Clean Enamel:** Ever Clean enamel is applied electrostatically, corner to corner and edge to edge to prevent cracking or cracks over time. It is a particular pyrolytic enamel, resistant to acids which, in addition to being pleasantly bright, promotes greater cleaning of the oven walls, thanks to its lower porosity. It is baked at over 850 ° C and slowly polymerized at a scientifically determined rate to ensure uniform depth and strength Ever Clean enamel creates an impeccable finish both on the inside of the oven and on the trays, making the surfaces of the oven incredibly easy to maintain over time as it reduces the adhesion of fat during cooking



**Fan assisted base:** the mix of fan and lower heating element alone allows to finish cooking foods already cooked on the surface but not internally more quickly. This system is recommended to finish cooking foods that are already well cooked on the surface, but not internally, which therefore require a moderate higher heat. Ideal for any type of food.



**Static:** Traditional cooking suitable for the preparation of one dish at a time. The fan is not active and the heat comes from below and from above at the same time. Static cooking is slower and more delicate, ideal in order to get well cooked and dry dishes even inside. Ideal for cooking all types of roasts, fatty meats, bread, filled cakes.



**ECO:** low energy consumption cooking: this function is particularly suitable for cooking on a single shelf with low energy consumption. It is recommended for all types of food except those that can generate a lot of moisture (for example vegetables). To achieve maximum energy savings and reduce time, it is recommended to put the food in the oven without preheating the cooking compartment



**Fan grill:** very intense heat coming only from above from a double heating element The fan is active. It allows the optimal grilling of thickest meats. Ideal for large cuts of meat.



**All glass inner door:** All glass inner door, a single flat surface which is simple to keep clean.



**Air cooling system:** to ensure a safe surface temperatures.



Electric



**Fresh Touch:** Most of Smeg ovens have a "cool door." Thanks to the combination of tangential cooling and internal heat-reflecting glasses, the temperature on the outer surface of the door is maintained below 50° C. In addition to providing safety, this system protects the sides of the furniture from overheating by the oven.



**Fan assisted:** Intense and homogeneous traditional cooking, also suitable for complex recipes. The fan is active and the heat comes from below and from above at the same time. Ventilated cooking ensures a faster and more homogeneous result, leaving fragrant foods outside and moister inside. Ideal for baked pasta, biscuits, roasts and cobblers.



**Circulaire:** it is the perfect function for cooking all types of dishes in a more delicate way. The heat comes from the back of the oven and is distributed quickly and evenly The fan is active. It is also ideal for cooking on multiple levels without mixing smells and flavors.



**Grill:** Very intense heat coming only from above from a double heating element. The fan is not active. Provides excellent grilling and gratinating results. Used at the end of cooking, it gives a uniform browning to dishes.



**Pizza function:** Specific function for cooking pizza in a pan. It allows to obtain a pizza that is soft inside and crispy outside with the topping perfectly cooked, not dry and not burnt.



**The inner door glass:** can be removed with a few quick movements for cleaning.



Side lights: Two opposing side lights increase visibility inside the oven.



Pizza function: Some ovens have an exclusive "Pizza" function which provides direct contact of the refractory stone for cooking pizza with low heating element. This allows cooking pizza in just 3 - 5 minutes, depending on the filling. This function is also ideal for cooking pies, baked fish and vegetables.



Air at 40°C provides the perfect environment for proving yeast type dough mixes. Simply select the function and place dough in the cavity for allotted



Rapid preheating: cooking is preceded by the preheating phase which allows the cooking compartment to reach the set temperature. This option reduces the time by up to 50%.



The oven cavity has 5 different cooking levels.



The capacity indicates the amount of usable space in the oven cavity in litres.



The capacity indicates the amount of usable space in the oven cavity in litres.



4.3 inch display with LED technology, usability with knobs + 3 touch keys